



JULIA JOHANSEN

Height: 184cm / 6' 0½" Bust: 79cm / 31" Waist: 63cm 25" Hips: 93cm / 36½" Shoes: 41 EU / 10 US / 8 UK



JULIA JOHANSEN

Height: 184cm / 6' 0½" Bust: 79cm / 31" Waist: 63cm 25" Hips: 93cm / 36½" Shoes: 41 EU / 10 US / 8 UK



JULIA JOHANSEN

Height: 184cm / 6' 0½" Bust: 79cm / 31" Waist: 63cm 25" Hips: 93cm / 36½" Shoes: 41 EU / 10 US / 8 UK



JULIA JOHANSEN

Height: 184cm / 6' 0½" Bust: 79cm / 31" Waist: 63cm 25" Hips: 93cm / 36½" Shoes: 41 EU / 10 US / 8 UK



JULIA JOHANSEN

Height: 184cm / 6' 0½" Bust: 79cm / 31" Waist: 63cm 25" Hips: 93cm / 36½" Shoes: 41 EU / 10 US / 8 UK



JULIA JOHANSEN

Height: 184cm / 6' 0½" Bust: 79cm / 31" Waist: 63cm 25" Hips: 93cm / 36½" Shoes: 41 EU / 10 US / 8 UK



PLAIT MATE

The fashion world can't get enough of plaits and neither can we. At Alexander Wang and Mia Mia, models sported long, chunky, deconstructed side plait styles at Oscar de la Renta models wore European-style braids swept around their heads. For a feminine braid twist, add paper flowers or fresh daisies – but keep an eye on them as they'll wilt before the day is done. Less-is-more make-up sets millennial style, but don't go too bare: you'll need a light foundation for that photo-ready finish.

Every dress with aquatic flower details, go for an application. Lisa Redman, Paper Flowers, Big girl braids, the best Lashes



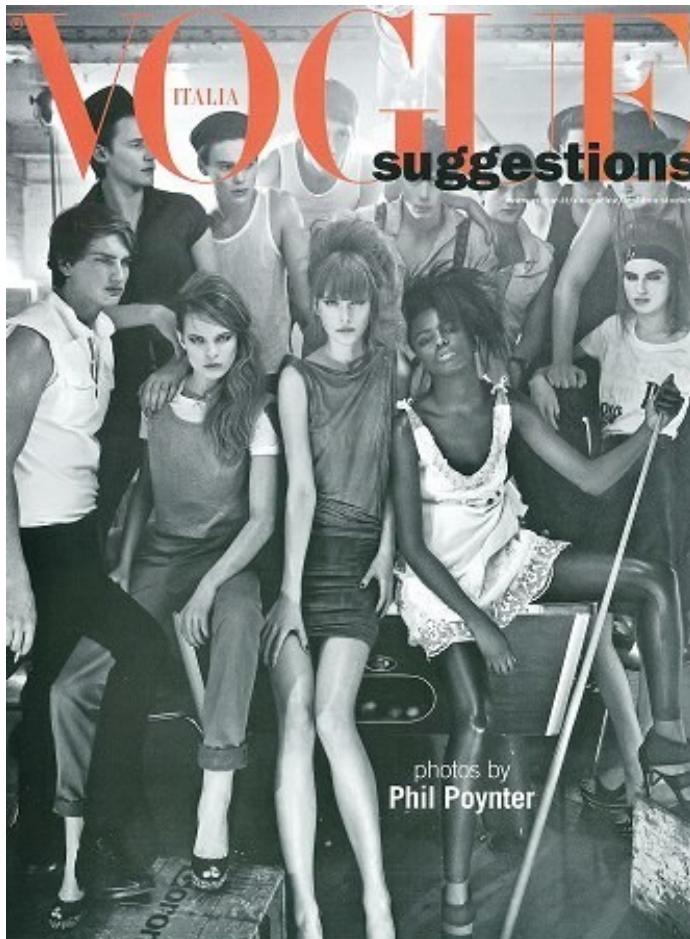
GROWING GLORY

Never knowingly under-estimated summer hats, Gwyneth went for black, shiny headbands. Anna got close to her hairdos with that girly, slightly flower and Sonia Rykiel inspired oversized headbands with crisscross cards. Give it a little pop with the rest of black flowers, topped with yellow roses. Tone with English roses, like fresh, dewy skin, delicate pink blush and almost-nude lips. Finish with a hint of smoky shadow.

Lace and tulle dress, £200, The Little Black Dress, £400, Jane Taylor Millinery

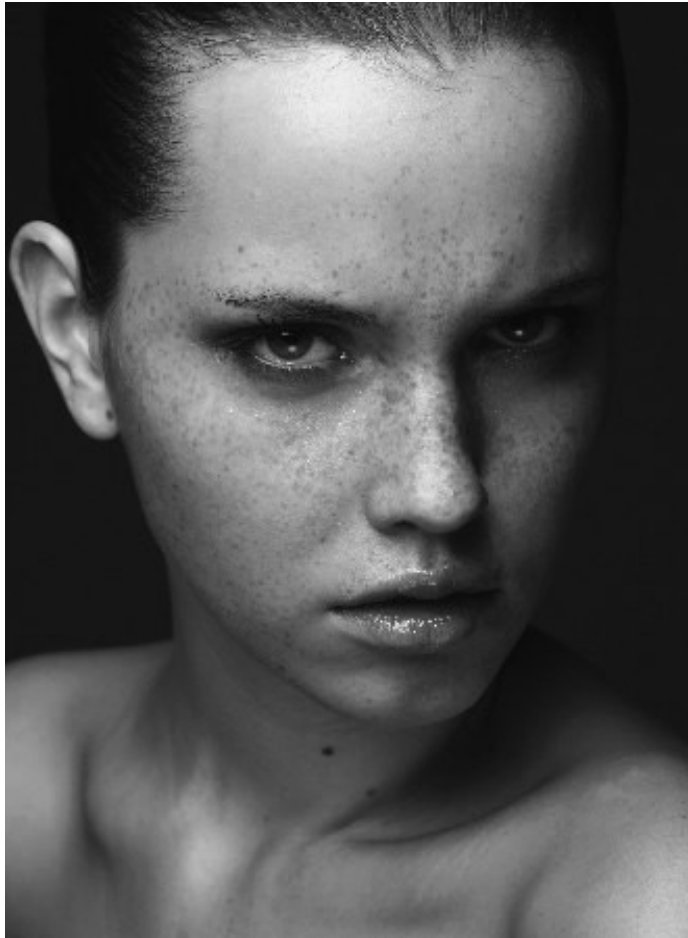
JULIA JOHANSEN

Height: 184cm / 6' 0½" Bust: 79cm / 31" Waist: 63cm 25" Hips: 93cm / 36½" Shoes: 41 EU / 10 US / 8 UK



JULIA JOHANSEN

Height: 184cm / 6' 0½" Bust: 79cm / 31" Waist: 63cm 25" Hips: 93cm / 36½" Shoes: 41 EU / 10 US / 8 UK



JULIA JOHANSEN

Height: 184cm / 6' 0½" Bust: 79cm / 31" Waist: 63cm 25" Hips: 93cm / 36½" Shoes: 41 EU / 10 US / 8 UK