



SCOTT BOURNE

Height: 189cm / 6' 2½" Chest: 100cm / 39½" Waist: 81cm 32" Shoes: 44 EU / 10 US / 9.5 UK Hair: Grey Eyes: Blue



SCOTT BOURNE

Height: 189cm / 6' 2½" Chest: 100cm / 39½" Waist: 81cm 32" Shoes: 44 EU / 10 US / 9.5 UK Hair: Grey Eyes: Blue



SCOTT BOURNE

Height: 189cm / 6' 2½" Chest: 100cm / 39½" Waist: 81cm 32" Shoes: 44 EU / 10 US / 9.5 UK Hair: Grey Eyes: Blue



SCOTT BOURNE

Height: 189cm / 6' 2½" Chest: 100cm / 39½" Waist: 81cm 32" Shoes: 44 EU / 10 US / 9.5 UK Hair: Grey Eyes: Blue



SCOTT BOURNE

Height: 189cm / 6' 2 1/2" Chest: 100cm / 39 1/2" Waist: 81cm / 32" Shoes: 44 EU / 10 US / 9.5 UK Hair: Grey Eyes: Blue



THE
BOURNE
SUPREMACY

Photo SACHA ROVINSKI
Style JANNAH ROY
Art Direction FRANCK DEMAURY
Model SCOTT BOURNE © NATHALIE

SCOTT BOURNE

Height: 189cm / 6' 2½" Chest: 100cm / 39½" Waist: 81cm 32" Shoes: 44 EU / 10 US / 9.5 UK Hair: Grey Eyes: Blue



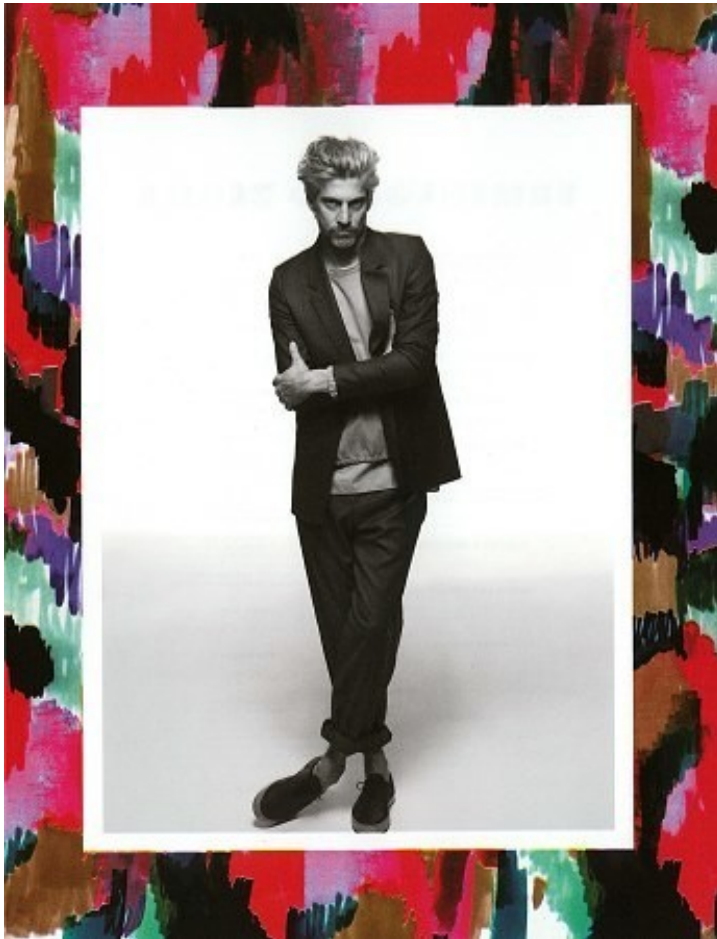
SCOTT BOURNE

Height: 189cm / 6' 2½" Chest: 100cm / 39½" Waist: 81cm 32" Shoes: 44 EU / 10 US / 9.5 UK Hair: Grey Eyes: Blue



SCOTT BOURNE

Height: 189cm / 6' 2½" Chest: 100cm / 39½" Waist: 81cm 32" Shoes: 44 EU / 10 US / 9.5 UK Hair: Grey Eyes: Blue



SCOTT BOURNE

Height: 189cm / 6' 2½" Chest: 100cm / 39½" Waist: 81cm 32" Shoes: 44 EU / 10 US / 9.5 UK Hair: Grey Eyes: Blue



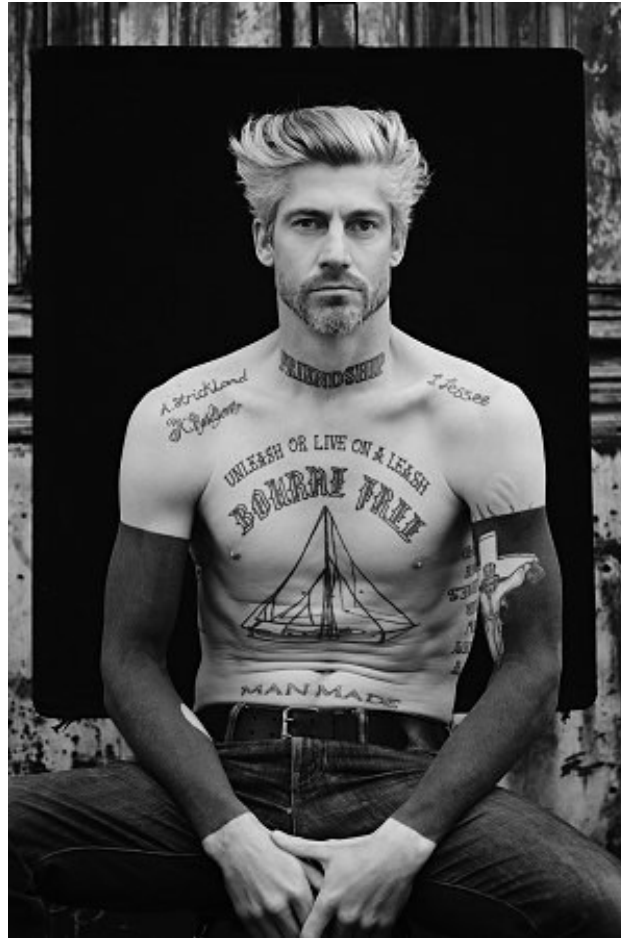
SCOTT BOURNE

Height: 189cm / 6' 2½" Chest: 100cm / 39½" Waist: 81cm 32" Shoes: 44 EU / 10 US / 9.5 UK Hair: Grey Eyes: Blue



SCOTT BOURNE

Height: 189cm / 6' 2½" Chest: 100cm / 39½" Waist: 81cm 32" Shoes: 44 EU / 10 US / 9.5 UK Hair: Grey Eyes: Blue



SCOTT BOURNE

Height: 189cm / 6' 2½" Chest: 100cm / 39½" Waist: 81cm 32" Shoes: 44 EU / 10 US / 9.5 UK Hair: Grey Eyes: Blue